

INITIATED BY:

**B**

# Elizabeth Knox Home and Hospital

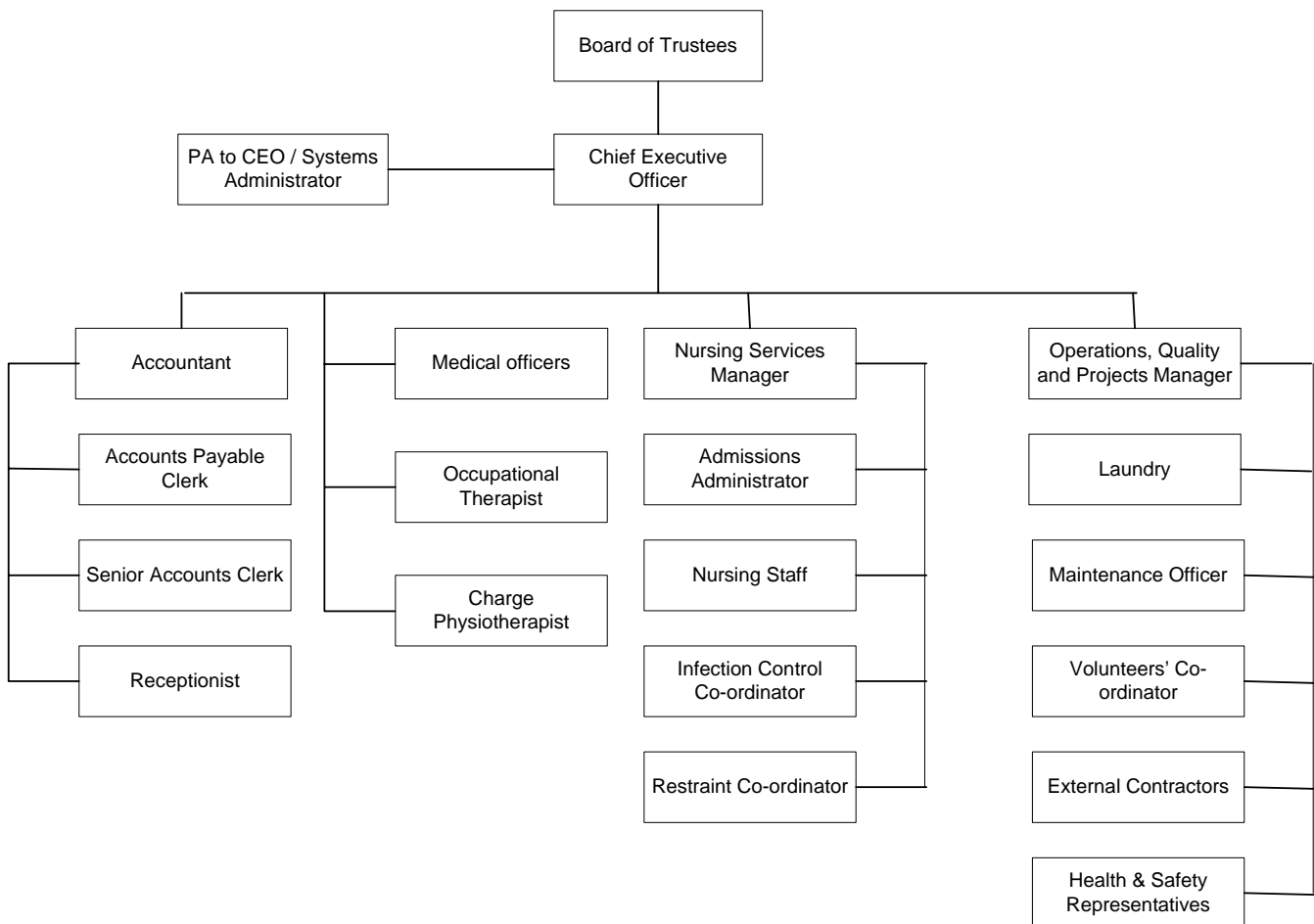
Owned and Operated by the Knox Home Trust Board



## Board of Trustees, Management and Lines of Authority

So as to make it clear to everybody how Elizabeth Knox Home and Hospital is operated, the chart below sets out how lines of authority and communication have been established by the Board of Trustees who are the Governing Body of the Knox Home Trust Board which was set up by an original deed dated 1911.

The Board are responsible for setting overall Policy in alignment with the Trust Deed and have designated the Chief Executive Officer to manage the business and operations of Knox. The Nursing Services Manager reports to the Chief Executive Officer and all the nursing staff report to the Nursing Services Manager. The Occupational Therapist and the Charge Physiotherapist report to the Chief Executive Officer but both have a functional relationship with the Nursing Services Manager. Medical Officers liaise closely with the Nursing Services Manager.



Staff should make approaches to the Chief Executive Officer, Nursing Services Manager or Operations, Quality and Projects Manager rather than to the Board.